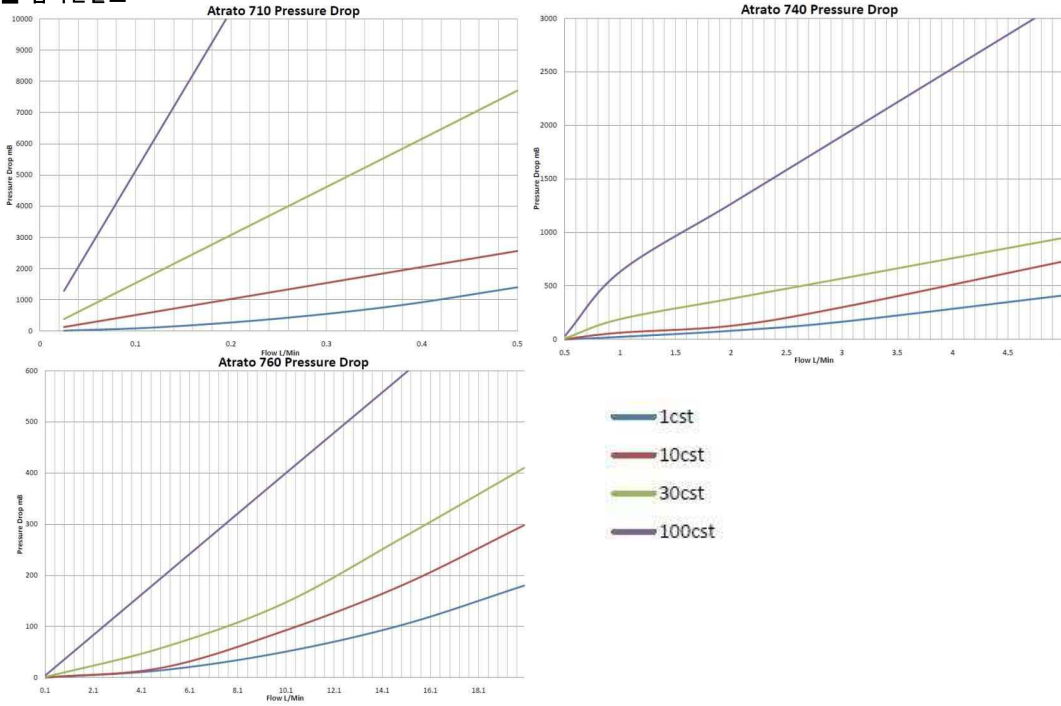
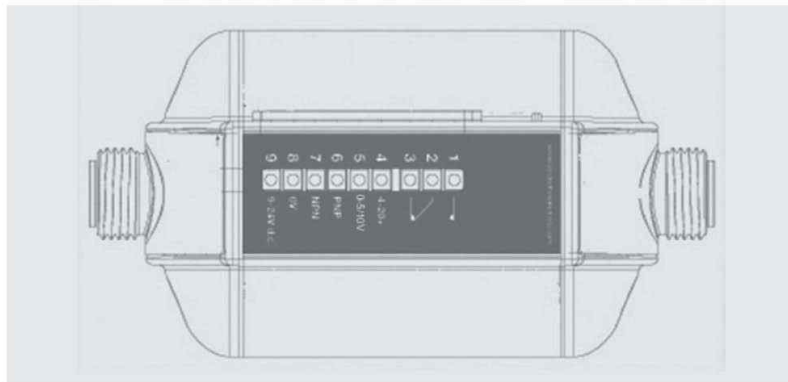


■ 압력손실표



■ 단자결선도



 = Operates on External Power OR USB = Operates on External Power only

Atrato Connector Assignments			
Cable Color	Pin N°	Label	Function
Yellow	1	RLY NO	Isolated relay contact; normally closed contact 24V 100mA
Green	2	RLY CO	Isolated relay contact; change over contact 24V 100mA
Gray	3	RLY NC	Isolated relay contact; normally open contact 24V 100mA
Blue	4	4-20mA +	Analogue current (4~20mA) output (referenced to 0V)
Brown	5	0 - 5/10V	Analogue voltage (0~5/10V) output (referenced to 0V)
-	6	PNP	Output 1 open collector PNP OR Input 1 (5 - 24V dc) e.g. switch to pin 9
White	7	NPN	Output 2 open collector NPN OR Input 2 (5 - 24 V dc) e.g. switch to pin 9
Black	8	0V	External ground; common for PNP, NPN and Analogue outputs
Red	9	+9 -24 V dc	External power; 9V - 24V (> 12V for Analogue output)



※ Pull-up 저항을 Pin No. 7-9 사이에 10kΩ으로 부착 바랍니다.

원텍프로세스
W Wintech Process Co. www.wintechprocess.co.kr

■ 외형크기

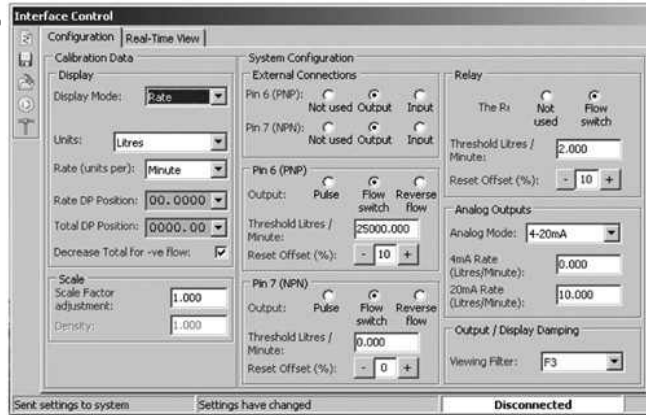
단위:mm

End fitting 'B'	Order code	Dimension 'A' mm
3/8" John Guest	0	145
1/2" BSP PEEK	1	142
1/2" NPT	2	180
1/2" BSP stainless	3	180

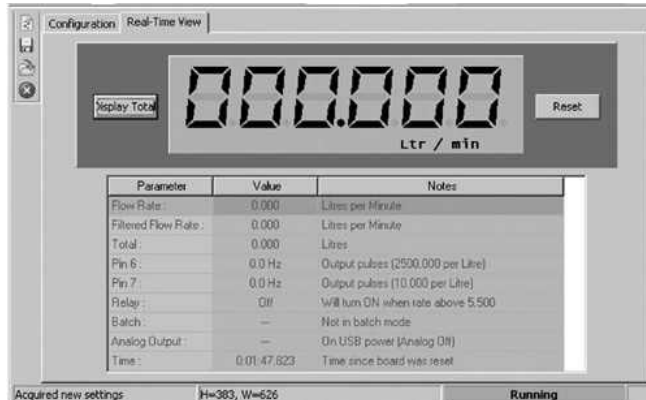
※ BSP Stainless 접속형

■ PC Interface

1) 파라미터 설정 화면
(zero cut-off, damping, filter 등)



2) 파라미터 감시 화면
(순시치, 적산치 Reset 등)



■ 적용사례

- Drink dispensing
- Chemical Injection
- Laboratory tests
- Cooling equipment
- Active flow alarms
- Semiconductor plant
- OEM applications
- Pilot Plant
- Fuel Cell
- Pharmaceutical
- Chemical & Petrochemical

■ 전용 지시계 모델번호

- WP3000 (판넬설치형, 순시치 지시)
- WP4200 (판넬설치형, 순시치 지시 및 적산)
- WP7400 (소켓설치형, 순시치 지시)

원텍프로세스
W Wintech Process Co. www.wintechprocess.co.kr